



PHISHING AWARENESS MADE EASY

/LIBRAESVA

PhishBrain 

WHO WE ARE, WHAT WE DO

Libraesva is a leading cybersecurity company providing advanced email security solutions. One of the most innovative brands in the security world, Libraesva has a global customer base covering all major industries, from education and public sector to fashion and lifestyle.

We are 100% focused on delivering email solutions that educate and protect organizations and their people against increasingly deceptive and difficult to identify attacks. Every day, our team of security experts review, analyze, improve, and update our products to deliver the strongest and most flexible solutions for all organizations regardless of size or complexity.

We help educate organizations and people through a variety of resources and tools, such as our **Email Security Tester** and **PhishBrain** phishing simulator, plus a comprehensive **Knowledge Base** of email threats, technology, security, compliance, and best practices.



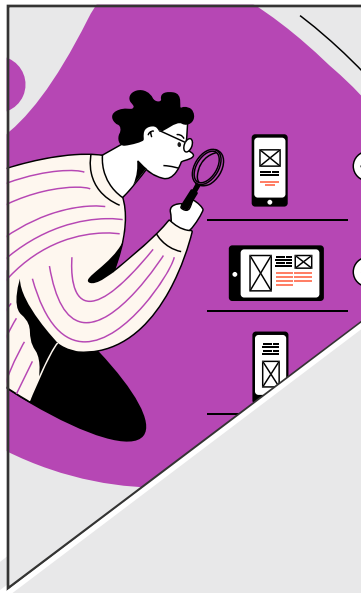
WHAT IS PHISHING?

Phishing is a type of email threat that consists of emails sent by an impersonated source, always containing malicious links or attachments, and with the purpose of tricking the victim into providing personal and sensitive information.



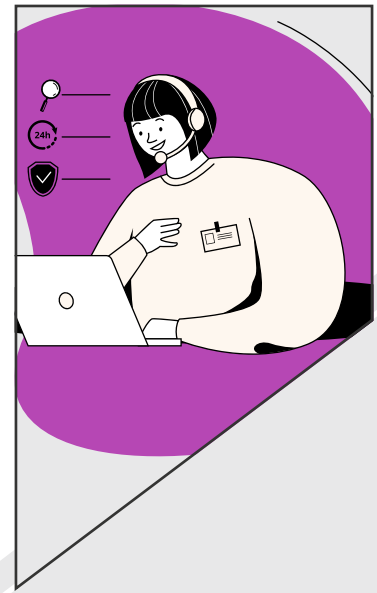
WHY IT WORKS

Phishing attacks are successful because they leverage the human-factor, which is the weakest component of a company's security. People do not give sufficient attention to seemingly legitimate requests and end up erroneously sharing data.



WHY YOU SHOULD CARE

Over 25% of phishing email recipients click on the content inside the email, and over 50% of those submit the requested information on the phishing websites.



WHAT IS THE COST TO BUSINESS

Breaches cost, on average, over \$130,000, and can reach into the Millions, resulting in many companies going out of business.

ABOUT PhishBrain

Libraesva PhishBrain is the easiest and most efficient phishing simulator for analyzing phishing vulnerability. PhishBrain identifies the highest risk employees and tracks their progress over time, in order to become a truly security-conscious company.

PhishBrain is developed by the leading Email Security and Anti-Phishing company-Libraesva. Libraesva has been protecting enterprises from email threats for over 10 years and incorporates the most recent and modern examples of phishing attacks as usable templates. Taking advantage of our experience, organizations can test their employees with realistic emails and landing pages.



UP TO 5 MAILBOXES?

THE SERVICE IS AVAILABLE FOR FREE!



FEATURES

- Real-time reporting on phishing campaign statistics and high-risk employees
- Send phishing emails all at once or distributed over a period of time
- Set a repeating schedule so employees can be tested on a regular basis
- Seamless integration with Microsoft 365®, Google Workspace and other LDAP servers
- Submit emails and websites to be converted into templates for use
- Flexible licensing (by number of mailboxes or number of email sends)
- Set up and manage campaigns from specific industries
- Multi-tenant support for MSPs

BENEFITS

USER FRIENDLY:

—
using a simple and intuitive interface, anyone can configure realistic phishing simulation campaigns

QUICKLY UP & RUNNING

—
phishing campaigns are ready to go in less than 10 minutes by easily choosing from several templates and landing pages

BRING YOUR BRAND:

—
personalize the experience with a brandable interface and fully customizable templates

BETTER INSIGHTS:

—
real-world templates and landing pages with in-depth reporting provide better insights into the most vulnerable employees



/LIBRAESVA

Libraesva Srl

P.zza Cermenati, 11
23900 Lecco
ITALY

Libraesva Limited

Spaces, 9 Greyfriars Rd
Reading RG1 1NU
UNITED KINGDOM

Web sites | email

www.libraesva.com | www.phishbrain.net | sales@libraesva.com